

Technical details:

NOBLEX® NW100

Camera & Attachment

Lens focus [mm]	50	35
Ø Lens [mm]	47	32
Detector	ASi	ASi
Detector resolution [pixel]	384 × 288	384 × 288
Pixel size [µm]	17	17
Calibration	autom.	autom.
Frame rate [Hz]	50	50
Display technology	OLED	OLED
Display resolution [pixel]	1024 × 768	1024 × 768
Optical magnification	2.5 ×	1.8 ×
Digital zoom	1 × to 8 ×	1 × to 8 ×
Weight [g]	520	480
Battery	2 × 18650	2 × 18650
Runtime[hours]	up to 8	up to 8
Powerbank USB	yes	yes
Image/video storage [internal]	yes	yes
Dimensions L × W × H [mm]	187 × 62 × 70	168 × 62 × 70
Warranty [years]	3	3
MSRP [€]	4,495.-	4,350.-
Article number	51006	51007

Delivery extent:

- Stay-On-Case
- 2 × 18650 battery and charger
- Scope adapter for Rusan ARM52
- USB connection cable
- User Manual
- Cleaning Cloth

With the purchase of a NW 100 device, you have decided for longevity and best quality „Made in Germany“. Nevertheless, should you need help, the technical service of NOBLEX will assist you quickly and reliably. If a NW 100 device fails, we guarantee the customer a replacement device within 48 hours.



In the development and manufacture of opto-electronic consumer products, NOBLEX GmbH is continuing the proud tradition of the production facilities of Carl Zeiss in Jena and, later, in Eisfeld in Thuringia. A 150-year success story in optical devices points to a vast fund of experience in optics, mechanics and electronics. NOBLEX has decades of expertise in producing and improving CNC machined parts. Therefore NOBLEX is able to grant an universal perfection from the beginning to the end of the production process. Quality assurance is ensured by state-of-the-art tactile and optical measuring technology.



NOBLEX® NW 100

Innovative thermal vision technology
Monocular and clip-on* in one

**Made in
Germany**



NOBLEX GmbH

Seerasen 2
98673 Eisfeld
Germany
fon +49 (0) 3686 371-0
fax +49 (0) 3686 371-201
info@noblex-germany.com
www.noblex-germany.com

* **Note:** Please note the legal requirements for the use of thermal imaging attachments on scopes in your federal state.

Perfected Dual-Use Thermal Camera

Detect and identify heat sources at any time of day or night. This is the realm where the new NOBLEX® NW 100 comes to life. Equipped with the latest generation of ASi sensors, humans or animals can be unmistakably detected even at distances of up to 1,000 meters. A unique device, packed in a compact full metal housing with low-noise and non-slip rubber coating.

Monocular and Clip-On* in Perfection

- From monocular to clip-on in seconds - without converting the optics
- User-optimized and automatic
- Unique adjustment as clip-on and absolute reliability of your scopes point of impact
- Easy use with Rusan adapter



Monocular mode — full screen



Clip-On mode
NOBLEX® NW 100



Conventional
Clip-On



NOBLEX intermediate adapter (included in delivery)
Adapter with bayonet lock as interface to the NW 100 and threaded connection M52 x 0.75 to the clamping adapter for the respective rifle scope objective.



Riflescope clamping adapter (not included in delivery, e.g. Rusan, Recknagel, ...)
Interface to NOBLEX adapter thread M52 x 0.75 required. Clamping diameter to be adjusted to the respective objective outside diameter of the riflescope. Available from specialist dealers.

Picture and Video Recording with Zoom

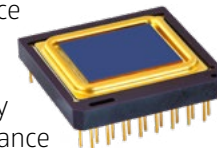
- Snapshots and video recording anytime
- Up to 8x digital zoom



Made in Germany

Infra-HD Sensor System

- Absolutely recoil proof, tested in defence and aerospace applications
- HD thermal sensor (384x288 pixel)
- European manufacturer, highest quality
- Factory calibration for highest performance
- Powerful germanium lens



Multifunctional Interface

- Power supply, data transfer
- External displays, software updates

Application Optimized Image Modes

Auto Mode

Always excellent image quality

Hunting Mode

Approach game, without any glare

Search Mode

Reliable detection of remote objects

City Mode

Highest contrast and details

True Focus Technology

- Adaptive eyepiece system
- Maximum sensor performance as clip-on*
- Perfect for magnifying optics

High Resolution OLED Full Color Display

- Color and monochrom image modes
- Everything in sight, also as clip-on
- Color schemes for day and night

Built for mission

- Focused on what really matters
- Reliable companion for any mission
- Simple and comfortable operation

Extra long Runtime

- Low power consumption
- 18650 batteries for up to 8 hours operation
- Rechargeable
- Incl. charger



* **Note:** Please note the legal requirements for the use of thermal imaging attachments on scopes in your federal state.